

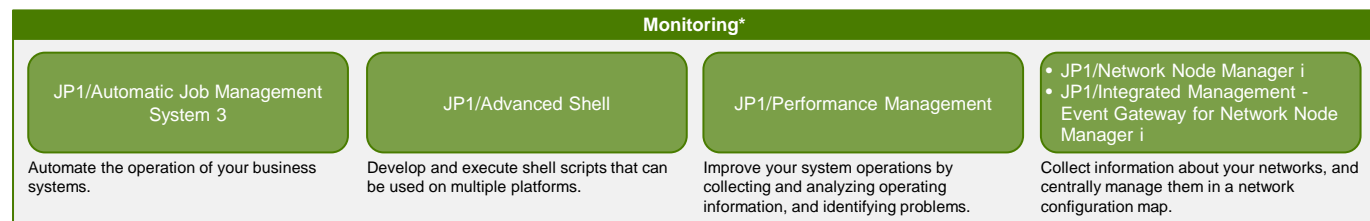
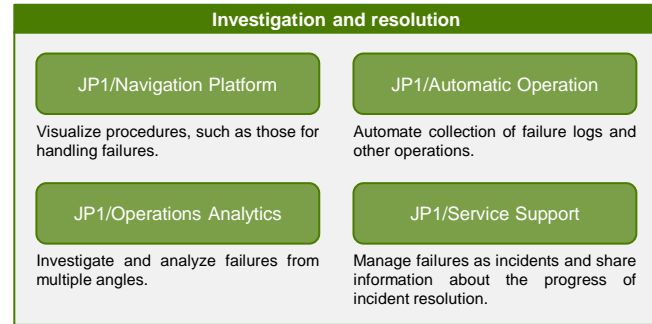
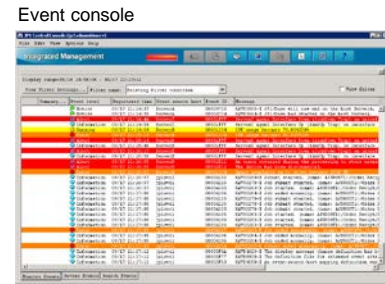
Link with other products

Launch applications to check event details

You can check the details of a JP1 event displayed in the event console by directly launching the application that generated the event. For example, you might launch the jobnet monitoring window of JP1/Automatic Job Management System 3 (the JP1 task automation product) to check jobnet execution statuses. This feature and others help to make your monitoring work more efficient.

Monitor resources with other JP1 products

When JP1/Integrated Management is linked with other JP1 products, you can more effectively carry out all tasks from system monitoring to the investigation and resolution of problems. For example, linking with JP1/Navigation Platform and JP1/Automatic Operation allows you to visualize and automate the procedures for handling various events, ensuring that failures can be resolved regardless of the skills of individual operators.



\*JP1/Integrated Management can be linked with products that issue JP1 events.

Products required for the main functions in this brochure (Windows version)

Product name
JP1/Integrated Management - Manager <sup>1</sup>
JP1/Base

<sup>1</sup>This is the full name of JP1/Integrated Management (the product introduced in this brochure).

- HITACHI, HiRDB, and JP1 are either trademarks or registered trademarks of Hitachi, Ltd. in Japan and other countries.
- Linux® is the registered trademark of Linus Torvalds in the U.S. and other countries.
- Microsoft, SQL Server, and Windows are either registered trademarks or trademarks of Microsoft Corporation in the United States and/or other countries.
- Oracle and Java are registered trademarks of Oracle and/or its affiliates.
- UNIX is a registered trademark of The Open Group in the United States and other countries.
- Other company and product names mentioned in this document may be the trademarks of their respective owners.

<http://www.hitachi.co.jp/jp1-e/>

HITACHI

Hitachi, Ltd.,  
Global Sales & Marketing Division  
Tel. +81-3-5471-3135 URL <http://www.hitachi.co.jp/jp1-e/>

Hitachi Asia Ltd.  
Tel. +65-6535-2100 URL <http://www.hitachi.com.sg/jp1/>

Hitachi Asia (Malaysia) Sdn. Bhd.  
Tel. +60-3-2031-8751

Hitachi Asia (Thailand) Co., Ltd.  
Tel. +66-2-632-9292

Hitachi Asia (Vietnam) Co., Ltd.  
Representative office in Hanoi  
Tel. +84-4-3933-3123

Hitachi Data Systems Corp. (U.S.A.)  
Tel. +1-781-810-6050  
URL <https://www.hitachivantara.com/go/jp1-solution/>

Hitachi Data Systems Ltd. (U.K.)  
Tel. +44-1753-618820

Hitachi Data Systems (China) Co., Ltd.  
Beijing  
Tel. +86-10-65876408

Shanghai  
Tel. +86-21-2211-1201 URL <http://www.jp1.cn/>

Shenzhen  
Tel. +86-755-32900301

Hitachi India Pvt. Ltd.  
Tel. +91-80-42698888 URL <http://www.hitachi.co.in/>

LG Hitachi Ltd.  
Tel. +82-70-8290-3700 URL <http://www.lghitachi.co.kr/>

•This catalog uses the following units of measurement: 1 kilobyte (KB) = 1,024 bytes; 1 megabyte (MB) = 1,048,576 bytes; 1 gigabyte (GB) = 1,073,741,824 bytes; and 1 terabyte (TB) = 1,099,511,627,776 bytes.  
 •Hitachi reserves the right to improve or otherwise change the specifications of the products described in this catalog without prior notice.  
 •The colors of actual product screens may appear to be slightly different from those in the screenshots printed in this catalog.  
 •For the most recent information on the support status of a JP1 product, including supported operating environments, please visit the JP1 website.  
 •If you plan to export any of these products, please check all restrictions (for example, those stipulated by Japan's Foreign Exchange and Foreign Trade Law and the export control laws and regulations of the United States), and carry out all required procedures.  
 If you require more information or clarification, please contact your Hitachi sales representative.

Need to aggregate and monitor logs and the various events that occur throughout the system?

HITACHI  
Inspire the Next

JP1/Integrated Management

Monitor your entire system (including logs and various events) from a single window in JP1/Integrated Management. Detect failures as they occur and swiftly notify administrators. With its functions that support failure investigation and resolution, JP1/Integrated Management helps you achieve stable, problem-free operations.

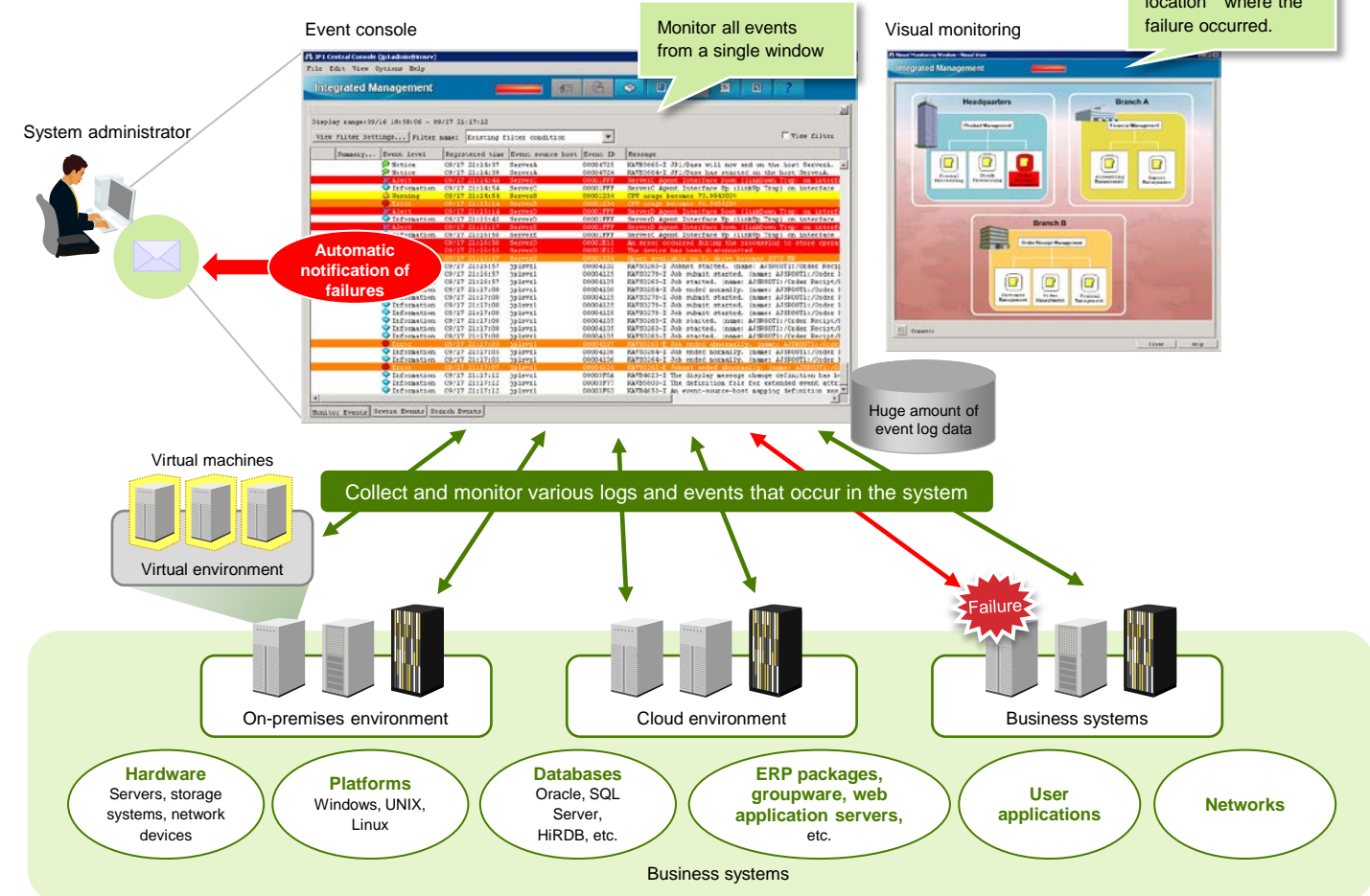
Monitor your entire system from a single location

JP1/Integrated Management provides a single console from which you can monitor all logs and events that occur in your system, whether these events originate from a local, on-premises environment or the cloud. For example, you can view the statuses of business systems running on Windows, Linux, UNIX, or other platforms, and verify that network devices, servers (and their processes and resources), and applications are operating properly. Monitoring multiple systems from a single window is far more efficient than monitoring each system individually, and reduces the workload of system administrators and operators. Furthermore, because JP1 supports the concurrent use of both agent-based monitoring and agentless monitoring in the same system, you can choose how best to monitor a particular server based on the server's importance.

Automate failure notifications, and investigate and resolve problems

With JP1, you can automatically alert system administrators and operators of failures in the system by sending notifications via email. JP1's many features help you respond to failures quickly and easily. For example, you can view on-screen information on how to handle a particular event; launch the window of the product that generated the event, directly from the JP1/Integrated Management monitoring window; and investigate and resolve problems that occur. These features reduce the workload of both system administrators and operators throughout the entire troubleshooting process.

Monitoring in JP1/Integrated Management



Easily identify the location where the failure occurred.

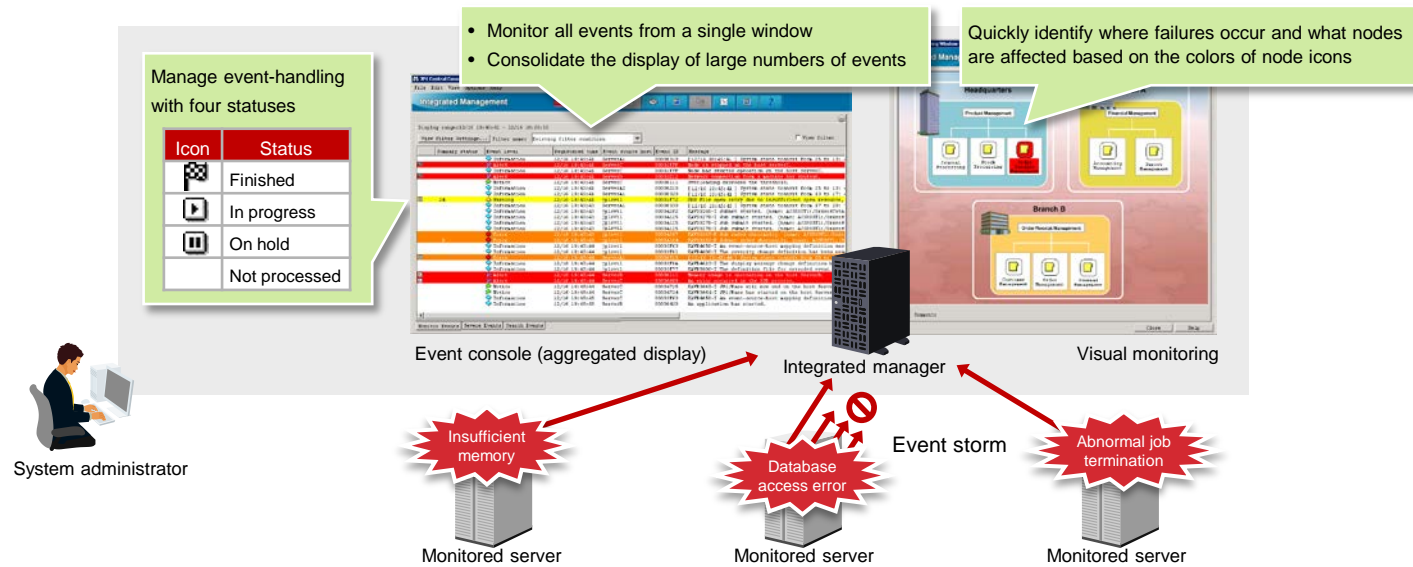
## Monitor events

### Collect and monitor events that occur in the system

JP1 provides a single screen on which you can monitor log information (such as the event log in Windows, the syslog in Linux and UNIX, and other logs from various applications) and information about events that occur throughout your systems. For each event, you can set a status ("In progress", etc.) that reflects the progress of event-handling. These statuses and other event information can be shared among operators to make monitoring more efficient. You can also customize the monitoring window to match the actual location and configuration of monitored targets by using a map or an image of the floor layout as the background, and adding icons to represent the managed targets. This flexibility helps you monitor your systems easily and intuitively.

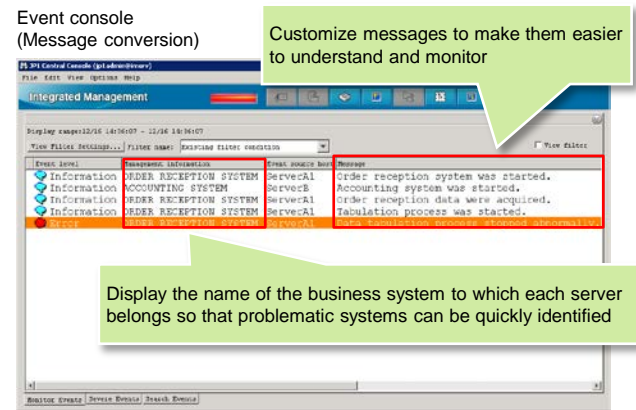
### Ensure efficiency, even when monitoring a large number of events

During an "event storm", when a large number of events are generated simultaneously, individual events are consolidated when displayed, making it easier to catch all important events. Along with this consolidation, automated actions, such as the sending of notifications, are suppressed to prevent the same action from being performed repeatedly. You can even stop the forwarding of events from monitored targets to the integrated manager, minimizing the overall impact of event storms on your monitoring operations.



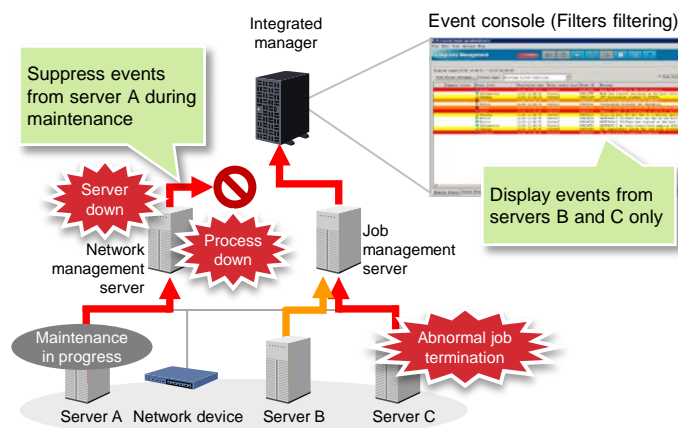
### Customize messages for easy monitoring

Different systems tend to generate event messages in different formats, and some of these formats might be hard to read or understand. With JP1, you can unify the style of messages generated by various systems to a consistent format. For example, you can customize where information appears or the order in which it is presented, or convert the actual message content into simpler wording. Improving the readability of messages in this way helps operators notice important events more readily.



### Conveniently display the names of systems and servers

You can configure the event console so that the names of the relevant business systems and servers are displayed alongside information about each event. Because you no longer need to investigate which systems and servers are related to a particular failure, you can start addressing the failure immediately. You can also filter the display by system and server name when you want to see only the events generated by a particular system or server. All of these functions contribute to more efficient monitoring.



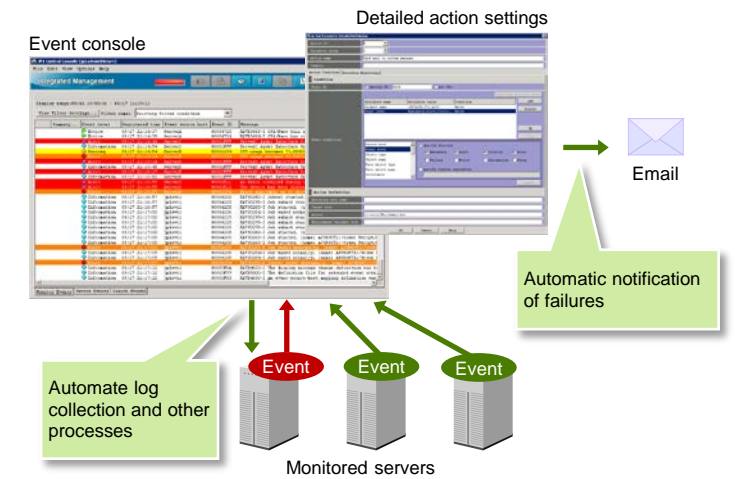
### Filter events to suit the task at hand

JP1 allows you to control which events are displayed, which is particularly useful when monitoring a large-scale system that generates many events. For example, operators can set filters to display only the events relevant to their current work. Additionally, you can configure settings so that the events displayed for each operator vary depending on the permissions assigned to that operator. By hiding the events that do not need to be monitored, you can optimize your monitoring operations.

## Send notifications

### Automate notifications and initial response

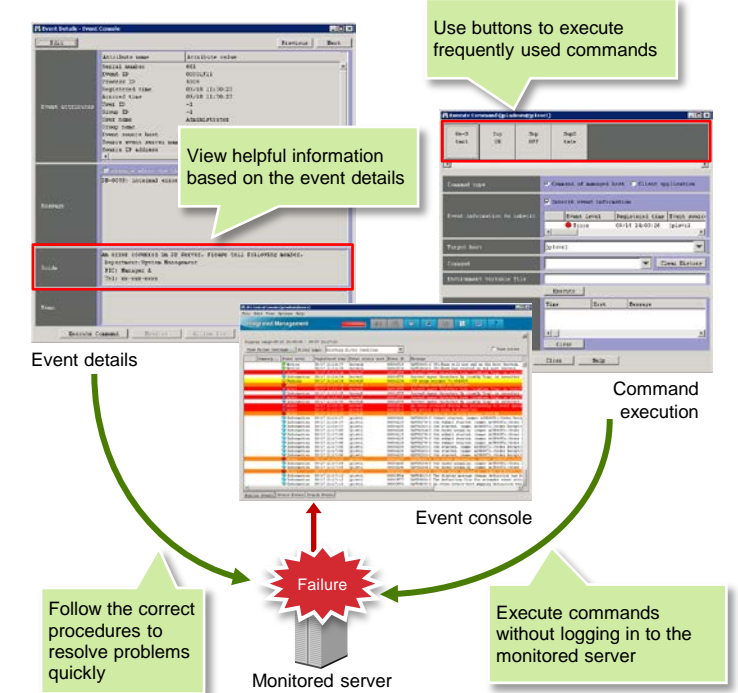
- Automate actions for individual events  
JP1 allows you to configure your systems so that, when an event occurs, actions such as the sending of notifications or the collection of log data will be automatically executed as the initial response. You can then check the statuses of such automatic actions on-screen, re-execute or cancel actions as necessary, and even temporarily suppress the execution of certain actions.
- Automate actions to be executed on monitored servers  
Actions that are automatically executed in response to events that occur on a particular monitored server can be executed on that server alone. Thus, even when the integrated manager is unavailable (for example, when it is temporarily down for maintenance), you can still receive notifications regarding failures directly from the monitored servers on which those failures occurred, and immediately retrieve the log entries generated when the failures occurred.



## Investigate and resolve problems

### Achieve rapid initial response

Whenever a failure occurs, JP1 displays helpful information, such as the procedure for handling the failure and the relevant contact persons. This information must be registered in a guide in advance. By doing so, you can provide operators with information they need to execute the initial response quickly and correctly. Such information might include the name and contact information of the person in charge of investigating a particular failure. Furthermore, you can eliminate the variations that might arise when failures are handled by different operators, because operators are now following a streamlined process. When new, useful information is found, it can be easily registered to the guide without stopping the system, allowing you to continuously improve your operations.



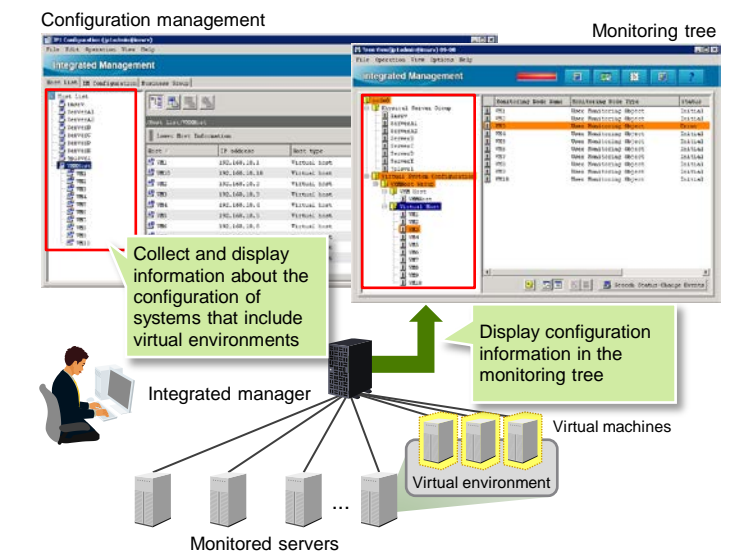
### Use commands to remotely investigate and resolve problems

Even without logging in to a monitored server, you can investigate and resolve problems from the manager by executing commands such as those for verifying that servers or processes have started and those for restarting services. You can also select a JP1 event from the event console and then pass information about that event to a command to be executed. Frequently used commands can be registered as command buttons to prevent operational mistakes.

## Manage the configuration of monitored servers

### Collect and view configuration information

JP1 collects information about the configuration of monitored servers and displays this information in a monitoring tree, making it easy to understand the hierarchical relationship between the integrated manager and the servers being monitored. When JP1 is linked with software for managing virtual environments or other similar software, you can also view information collected about the configuration of virtual machines in the monitoring tree. As a result, when a failure occurs in a virtual environment, you can easily determine which operations are affected by the failure and identify the physical servers that need to be addressed.



### Manage monitored servers

When definitions are updated, JP1 allows you to distribute the updates to multiple monitored servers with a single action from the integrated manager. You can also start and stop the monitoring of logs generated by monitored servers, easing the workload of system administrators and making it easier to investigate failures.